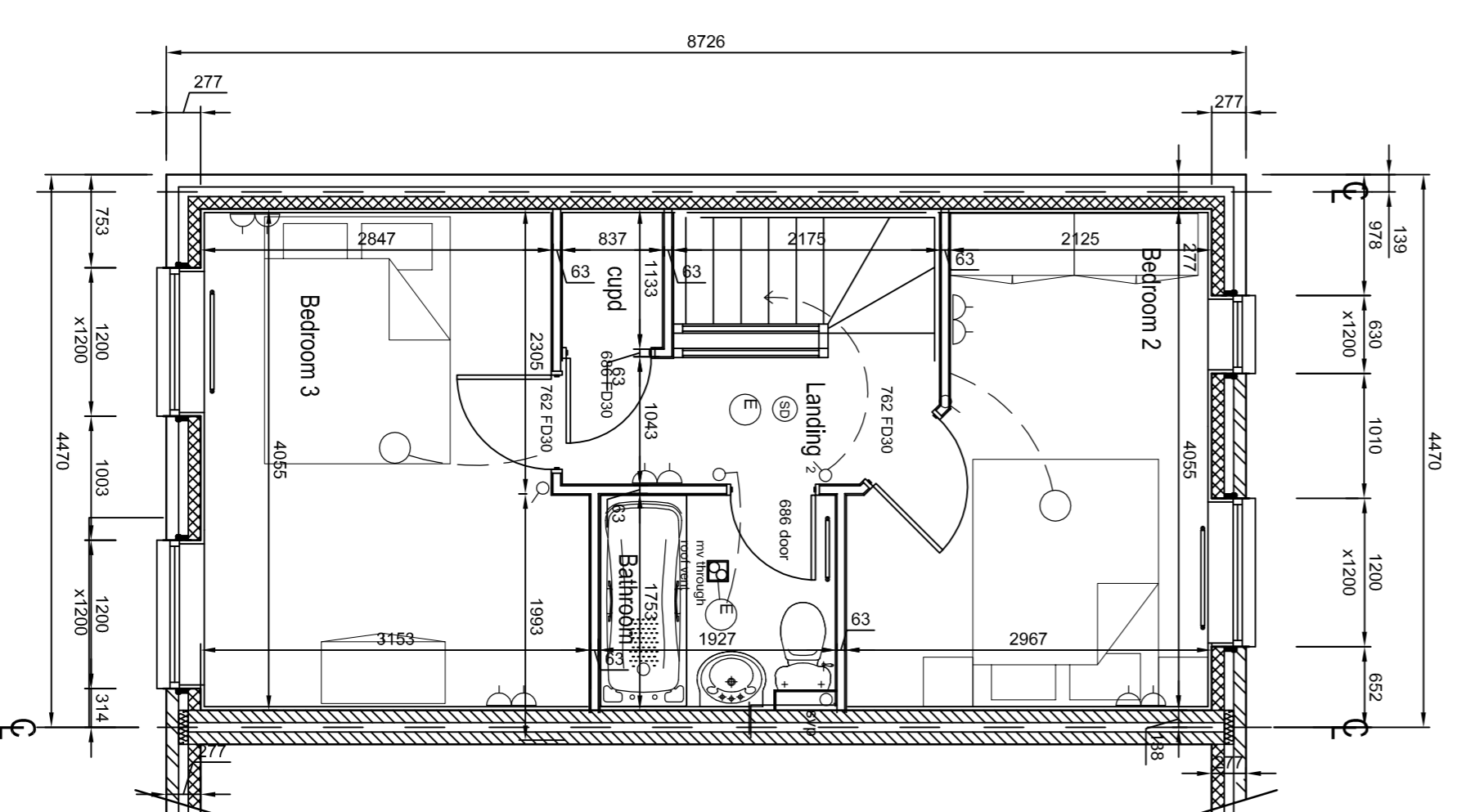
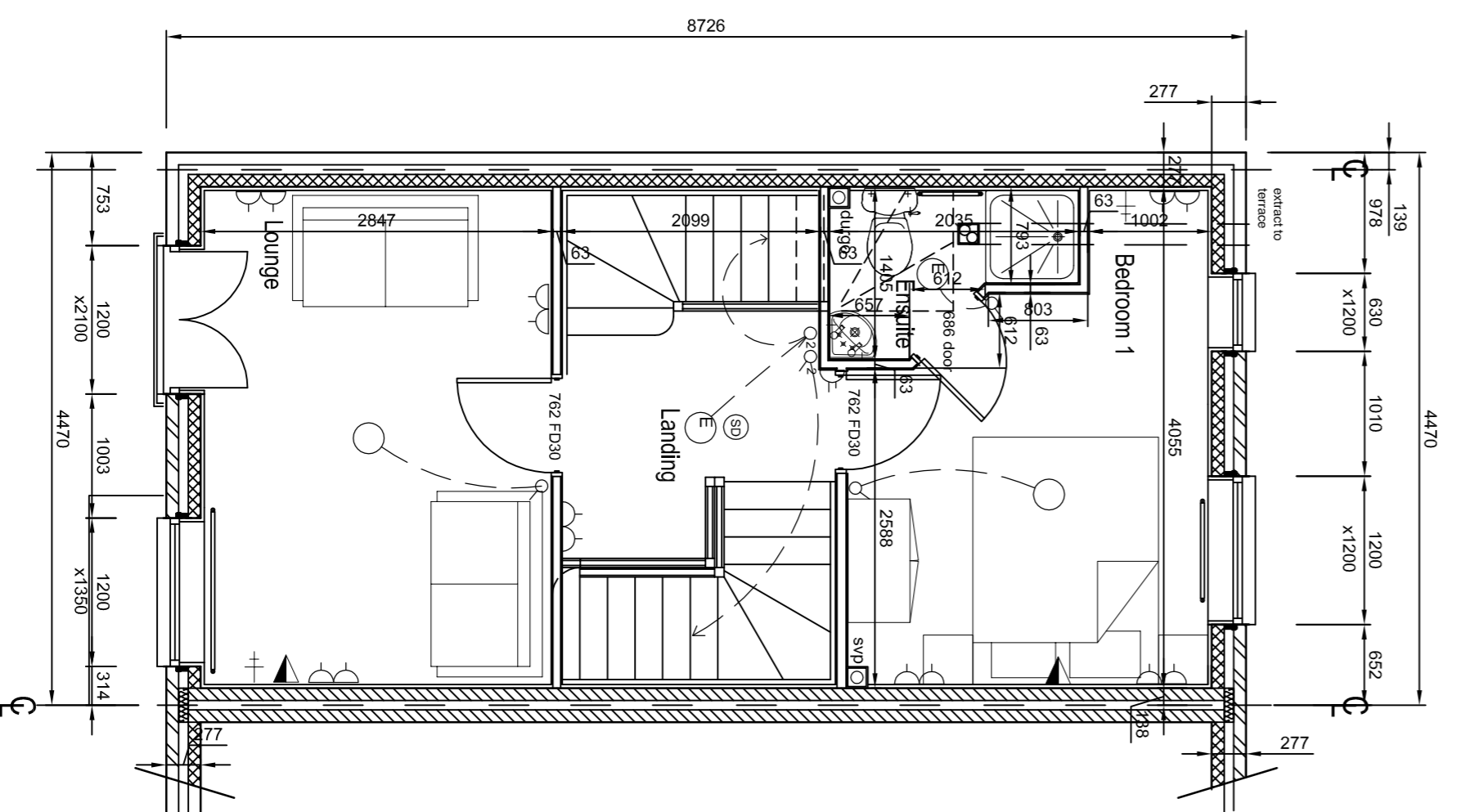
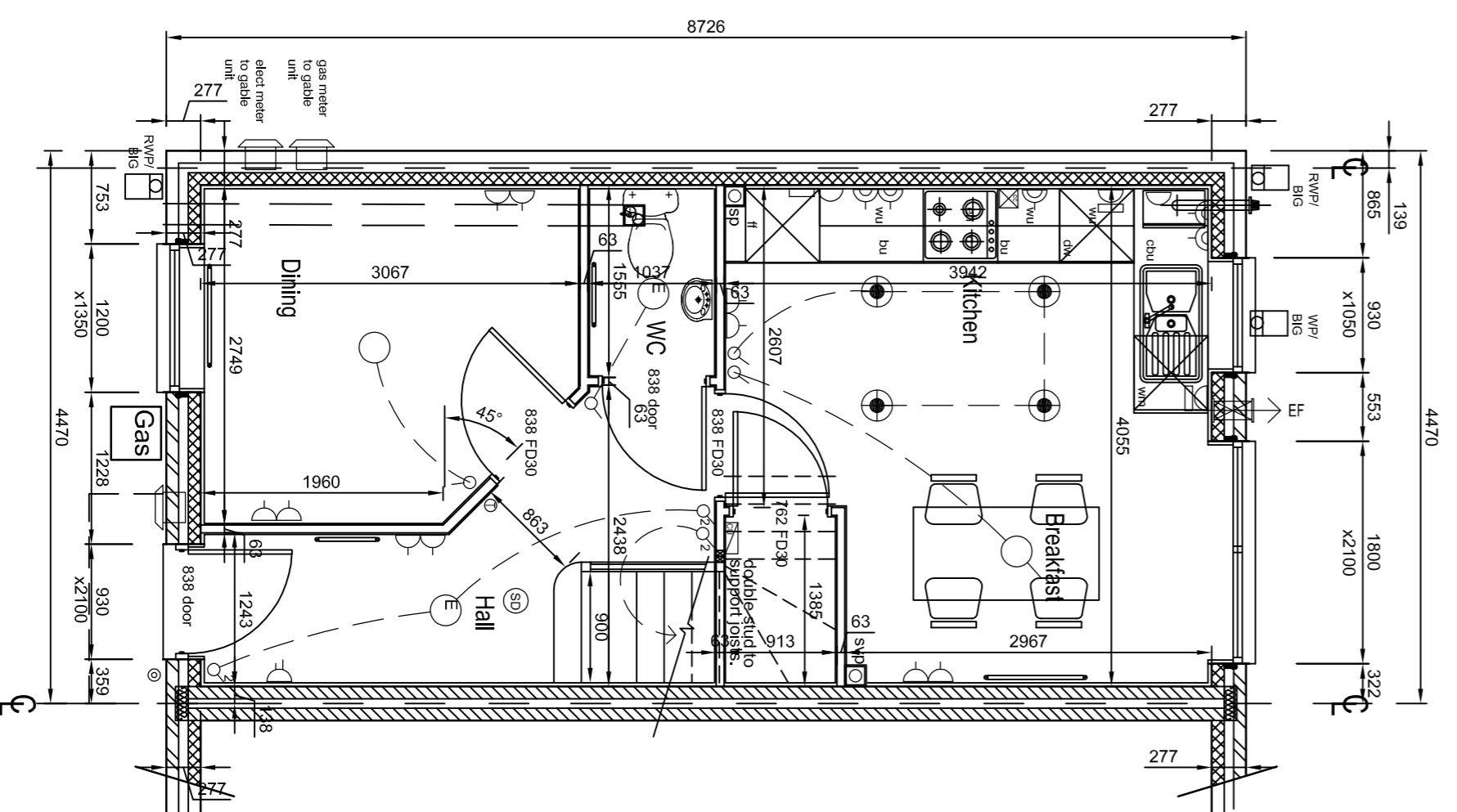
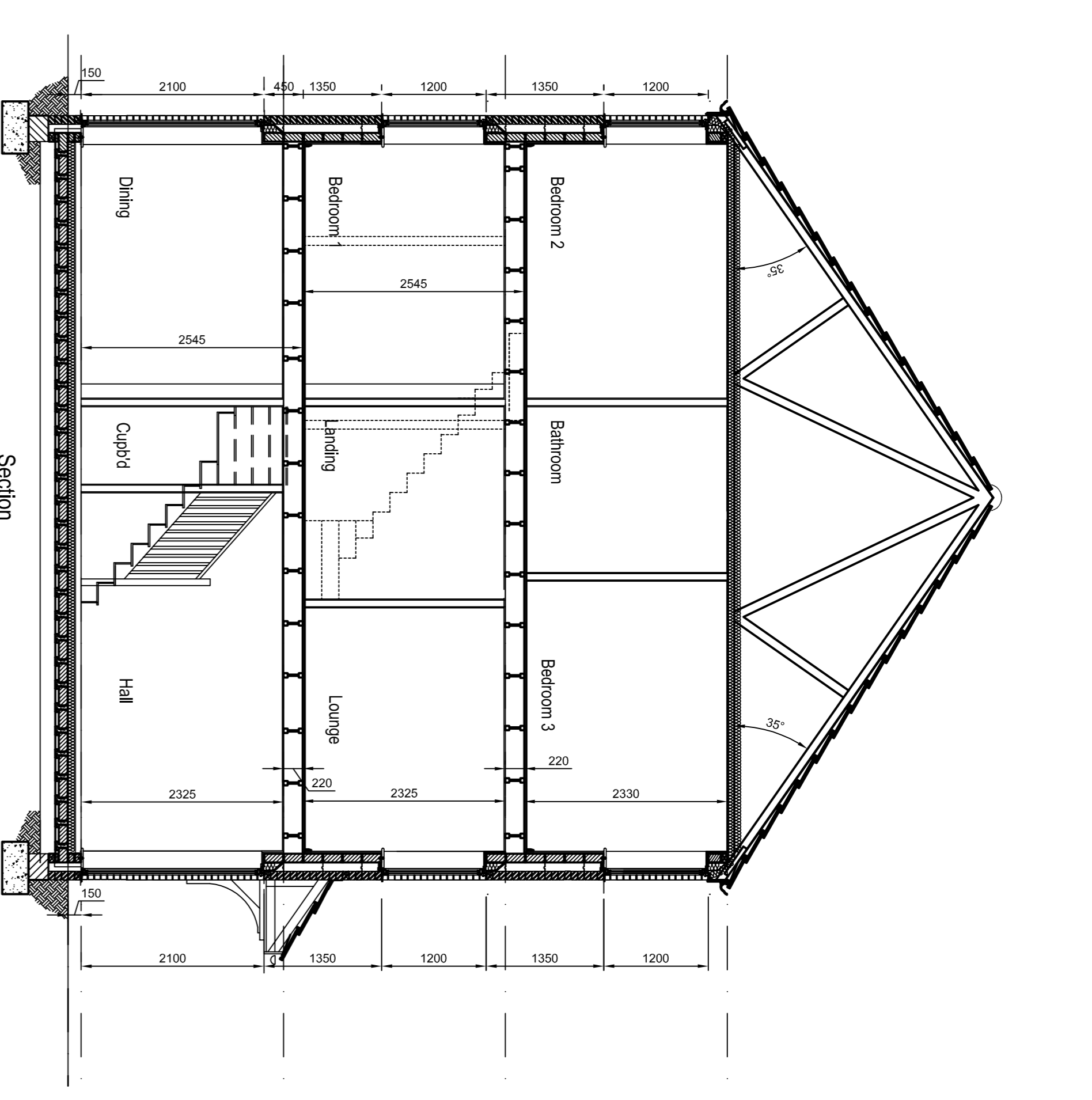


\* POSITION OF ANY HORIZONTAL MOVEMENT JOINTS TO BE SPECIFIED BY RENDER SPECIALIST IF REQUIRED.



Electrical Key

- ⊕ Thermostat
- ⊖ Bell push
- ⚡ Bellis Telecom lines
- ⊕ Lamp fixed trackbed spur with unswitched socket @ low level
- ⊕ 2 Light switch (2 way)
- ⊕ Pull cord
- ⊕ Lamp socket outlet
- ⊕ Television aerial outlet
- ⊕ Heating zone valve (depending on site spec)
- ⊕ Smoke detector
- ⊕ Double chime
- ⊕ Lamp fixed trackbed spur and main light
- ⊕ Energy efficient light fitting
- ⊕ EF Wall mounted extract fan
- ⊕ Telephone outlet
- ⊕ Consumer control unit
- ⊕ Shower point @ high level
- ⊕ Bathing light
- ⊕ Pendant light
- ⊕ Lamp socket outlet
- ⊕ Lamp socket outlet
- ⊕ Corner control switch with 13amp socket outlet @ high level
- ⊕ Lamp socket outlet @ high level
- ⊕ Lamp socket outlet @ high level
- ⊕ Ceiling mounted extract fan
- ⊕ Gas point depending on sales specification

REVISIONS	DATE	BY
DRAWN	CHECKED	DATE
SMC		Sept 2011
DWG No.	215/A/GREY/01	REV
SCALE	1:50	ORIGINAL DRAWING SHEET SIZE A1
TITLE	Development at :- VA Tech Greylfairs Housetype Plans & Elevations	
<p>PERSIMMON HOMES</p> <p>PERSIMMON HOMES NORTH EAST LTD</p> <p>PERSIMMON HOUSE</p> <p>CLASPER WAY</p> <p>SWALWELL</p> <p>NEWCASTLE UPON TYNE</p> <p>NE16 3BE</p> <p>Tel 0191 4890111 Fax 0191 4891211</p>		
<p>WRITTEN DIMENSIONS TO BE TAKEN IN PREFERENCE TO SCALE. ALL DIMENSIONS TO BE CHECKED ON SITE AND ANY DISCREPANCIES REPORTED IMMEDIATELY.</p>		